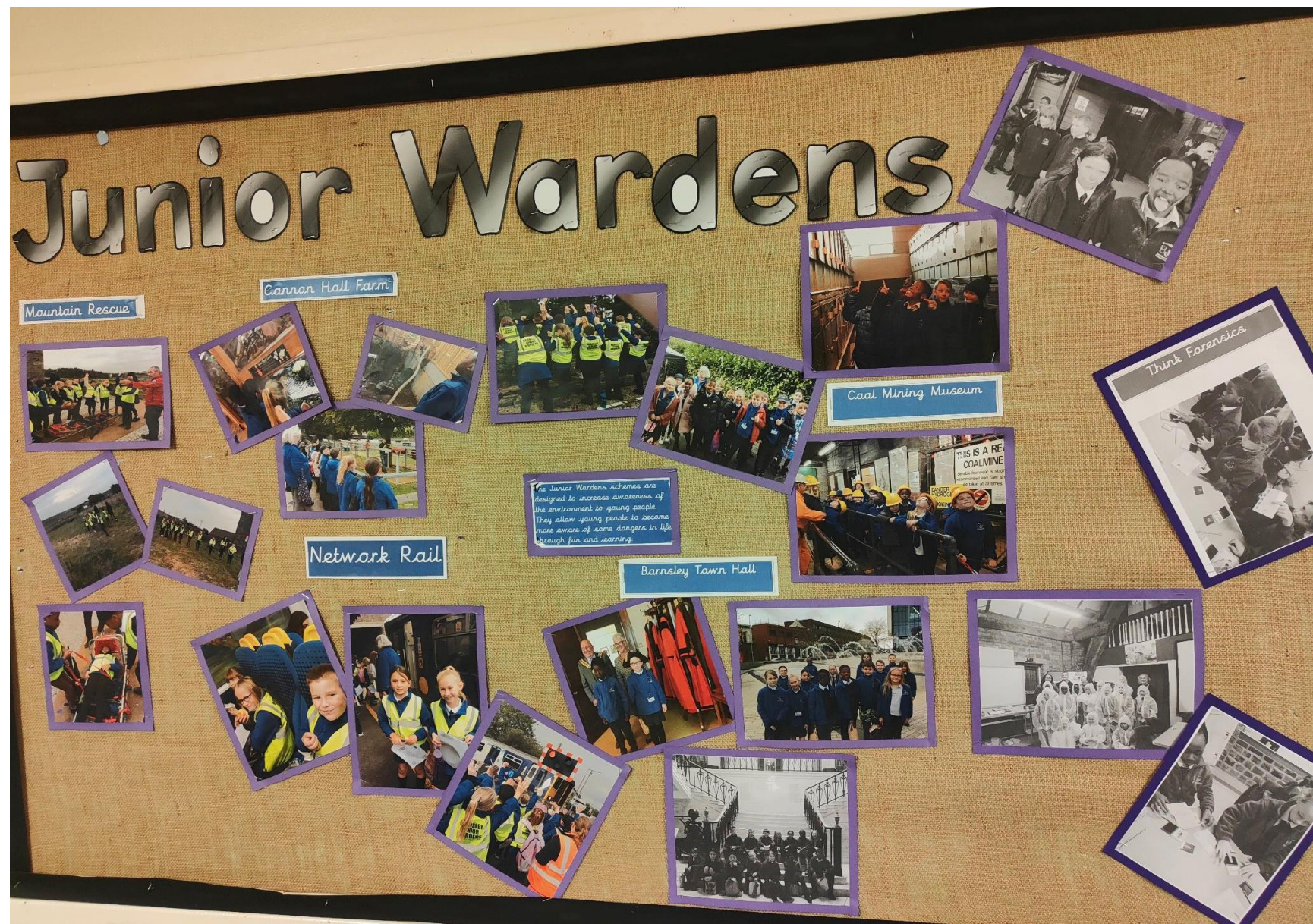


# Junior Wardens



Mountain Rescue

Cannon Hall Farm

Coal Mining Museum

Think Forensics

Network Rail

Barnsley Town Hall

The Junior Wardens schemes are designed to increase awareness of the environment to young people. They allow young people to become more aware of some dangers in life through fun and learning.

The Junior Wardens schemes are designed to increase awareness of the environment to young people and have many different strands allowing the young people to become more aware of some of the dangers in life through fun and learning. The overall aim of the project is to promote good citizenship, build character, team spirit and self-confidence.

It is supported by South Yorkshire Police, South Yorkshire Fire and Rescue, Yorkshire Ambulance Service, Barnsley Council, Bernesley Homes, the National Mining Museum, Network Rail, Northern Rail, Cannon Hall Farm , Holiday Inn and Woodhead Mountain Rescue.

















MAYORS OF THE METROPOLITAN BOROUGH OF BARNLEY

1874 -> JAMES FERRELL DEERMAN 1<sup>st</sup>  
1875 -> EDWARD BROWN  
1876 -> PAUL RILEY  
1877 -> JOHN CLAREN STANLEY J.  
1878 -> JOHN BROWN  
1879 -> HENRY ALEXANDER POOL  
1880 -> EDWARD GILSON  
1881 -> JOHN B. WALK  
1882 -> THOMAS EDWINSON BROWN  
1883 -> BEVIN DE BOWDLE  
1884 -> EDWARD STILES LLOYD  
1885 -> JOHN WILSON B. M. J.P.  
1886 -> ROY WARDEN B.T.M.  
1887 -> ARTHUR G. GIBBARD  
1888 -> EDWARD J. STONEY  
1889 -> EDWARD J. STONEY  
1890 -> THOMAS WATSON  
1891 -> EDWARD WILSON  
1892 -> EDWARD BARNFIELD  
1893 -> EDWARD WATTS

1894 -> BENN G. HAYTHORN  
1895 -> LINDA BURGILL  
1896 -> JOHN DUNN  
1897 -> STEVE DUNN  
1898 -> EDWARD BARNFIELD  
1899 -> EDWARD BARNFIELD  
1900 -> EDWARD BARNFIELD  
1901 -> JAMES MICHAEL STONE

1902 -> ALICE CARTWRIGHT  
1903 -> JOHN WATTS  
1904 -> CLARENCE WILSON  
1905 -> STEVE DUNN  
1906 -> JOHN WATTS  
1907 -> EDWARD BARNFIELD  
1908 -> EDWARD BARNFIELD  
1909 -> EDWARD BARNFIELD  
1910 -> EDWARD BARNFIELD  
1911 -> EDWARD BARNFIELD  
1912 -> EDWARD BARNFIELD  
1913 -> EDWARD BARNFIELD  
1914 -> EDWARD BARNFIELD  
1915 -> EDWARD BARNFIELD  
1916 -> EDWARD BARNFIELD  
1917 -> EDWARD BARNFIELD  
1918 -> EDWARD BARNFIELD  
1919 -> EDWARD BARNFIELD  
1920 -> EDWARD BARNFIELD  
1921 -> EDWARD BARNFIELD  
1922 -> EDWARD BARNFIELD  
1923 -> EDWARD BARNFIELD  
1924 -> EDWARD BARNFIELD  
1925 -> EDWARD BARNFIELD  
1926 -> EDWARD BARNFIELD  
1927 -> EDWARD BARNFIELD  
1928 -> EDWARD BARNFIELD  
1929 -> EDWARD BARNFIELD  
1930 -> EDWARD BARNFIELD  
1931 -> EDWARD BARNFIELD  
1932 -> EDWARD BARNFIELD  
1933 -> EDWARD BARNFIELD  
1934 -> EDWARD BARNFIELD  
1935 -> EDWARD BARNFIELD  
1936 -> EDWARD BARNFIELD  
1937 -> EDWARD BARNFIELD  
1938 -> EDWARD BARNFIELD  
1939 -> EDWARD BARNFIELD  
1940 -> EDWARD BARNFIELD  
1941 -> EDWARD BARNFIELD  
1942 -> EDWARD BARNFIELD  
1943 -> EDWARD BARNFIELD  
1944 -> EDWARD BARNFIELD  
1945 -> EDWARD BARNFIELD  
1946 -> EDWARD BARNFIELD  
1947 -> EDWARD BARNFIELD  
1948 -> EDWARD BARNFIELD  
1949 -> EDWARD BARNFIELD  
1950 -> EDWARD BARNFIELD  
1951 -> EDWARD BARNFIELD  
1952 -> EDWARD BARNFIELD  
1953 -> EDWARD BARNFIELD  
1954 -> EDWARD BARNFIELD  
1955 -> EDWARD BARNFIELD  
1956 -> EDWARD BARNFIELD  
1957 -> EDWARD BARNFIELD  
1958 -> EDWARD BARNFIELD  
1959 -> EDWARD BARNFIELD  
1960 -> EDWARD BARNFIELD  
1961 -> EDWARD BARNFIELD  
1962 -> EDWARD BARNFIELD  
1963 -> EDWARD BARNFIELD  
1964 -> EDWARD BARNFIELD  
1965 -> EDWARD BARNFIELD  
1966 -> EDWARD BARNFIELD  
1967 -> EDWARD BARNFIELD  
1968 -> EDWARD BARNFIELD  
1969 -> EDWARD BARNFIELD  
1970 -> EDWARD BARNFIELD  
1971 -> EDWARD BARNFIELD  
1972 -> EDWARD BARNFIELD  
1973 -> EDWARD BARNFIELD  
1974 -> EDWARD BARNFIELD  
1975 -> EDWARD BARNFIELD  
1976 -> EDWARD BARNFIELD  
1977 -> EDWARD BARNFIELD  
1978 -> EDWARD BARNFIELD  
1979 -> EDWARD BARNFIELD  
1980 -> EDWARD BARNFIELD  
1981 -> EDWARD BARNFIELD  
1982 -> EDWARD BARNFIELD  
1983 -> EDWARD BARNFIELD  
1984 -> EDWARD BARNFIELD  
1985 -> EDWARD BARNFIELD  
1986 -> EDWARD BARNFIELD  
1987 -> EDWARD BARNFIELD  
1988 -> EDWARD BARNFIELD  
1989 -> EDWARD BARNFIELD  
1990 -> EDWARD BARNFIELD  
1991 -> EDWARD BARNFIELD  
1992 -> EDWARD BARNFIELD  
1993 -> EDWARD BARNFIELD  
1994 -> EDWARD BARNFIELD  
1995 -> EDWARD BARNFIELD  
1996 -> EDWARD BARNFIELD  
1997 -> EDWARD BARNFIELD  
1998 -> EDWARD BARNFIELD  
1999 -> EDWARD BARNFIELD  
2000 -> EDWARD BARNFIELD  
2001 -> EDWARD BARNFIELD  
2002 -> EDWARD BARNFIELD  
2003 -> EDWARD BARNFIELD  
2004 -> EDWARD BARNFIELD  
2005 -> EDWARD BARNFIELD  
2006 -> EDWARD BARNFIELD  
2007 -> EDWARD BARNFIELD  
2008 -> EDWARD BARNFIELD  
2009 -> EDWARD BARNFIELD  
2010 -> EDWARD BARNFIELD  
2011 -> EDWARD BARNFIELD  
2012 -> EDWARD BARNFIELD  
2013 -> EDWARD BARNFIELD  
2014 -> EDWARD BARNFIELD  
2015 -> EDWARD BARNFIELD  
2016 -> EDWARD BARNFIELD  
2017 -> EDWARD BARNFIELD  
2018 -> EDWARD BARNFIELD  
2019 -> EDWARD BARNFIELD  
2020 -> EDWARD BARNFIELD  
2021 -> EDWARD BARNFIELD  
2022 -> EDWARD BARNFIELD  
2023 -> EDWARD BARNFIELD  
2024 -> EDWARD BARNFIELD  
2025 -> EDWARD BARNFIELD

ED SERVICE AWARDS - SELECTED MEMBERS

EDWARD BARNFIELD













1 **Programme - 1919**  
To mark the centenary of the end of the First World War, the British Army will be holding a series of events across the country.

2 **Sentry Tomb in Park**  
The first World War sent over 800,000 British soldiers to the front. At the end of the war, many of these soldiers were buried in the trenches.

**We Will Remember Them**  
These objects and images show how British soldiers lived and fought in war. They will never be forgotten.

These objects and images show how British soldiers lived and fought in war. They will never be forgotten.









SELF-CONTAINED BREATHING APPARATUS



MODERN EQUIPMENT

Firefighters rely on their senses of hearing, smell, sight and touch to do their job - experience their world below.

Press the tiles and listen carefully to the different sounds.



What can you hear? Why would a rescuer be concerned if they hear these sounds during a rescue mission?



What do these sounds tell you about the situation?

UNIONS AND ACTIVISM





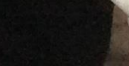
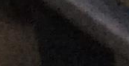
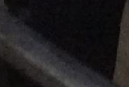
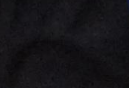
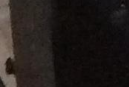
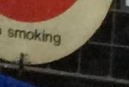
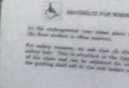
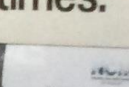
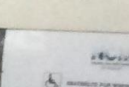
**THIS IS A REAL  
COALMINE**  
Sensible footwear is strongly  
recommended and care should  
be taken at all times.

**DANGER  
HYDROGEN  
NO SMOKING**



**SMOKING**  
No smoking in this area.  
The National Coal  
Mining Museum  
is grateful to  
RJB Deep Mines Ltd  
for their sponsorship  
of the Museum.

**CONTRABAND**  
No mobile phones, cameras, video cameras, MP3 players, or any other electronic equipment are allowed in this area.  
No food or drink is allowed in this area.  
No alcohol is allowed in this area.  
No weapons or dangerous items are allowed in this area.  
No pets are allowed in this area.  
No large bags or suitcases are allowed in this area.  
No heavy bags or equipment are allowed in this area.  
No tools or equipment are allowed in this area.  
No vehicles are allowed in this area.  
No animals are allowed in this area.  
No plants or flowers are allowed in this area.  
No fireworks or explosives are allowed in this area.  
No flammable liquids or gases are allowed in this area.  
No volatile substances are allowed in this area.  
No toxic substances are allowed in this area.  
No corrosive substances are allowed in this area.  
No radioactive substances are allowed in this area.  
No infectious substances are allowed in this area.  
No highly flammable substances are allowed in this area.  
No extremely flammable substances are allowed in this area.  
No oxidizing substances are allowed in this area.  
No organic peroxides are allowed in this area.  
No acids are allowed in this area.  
No alkalis are allowed in this area.  
No poisons are allowed in this area.  
No irritants are allowed in this area.  
No sensitizers are allowed in this area.  
No carcinogens are allowed in this area.  
No mutagens are allowed in this area.  
No reproductive toxins are allowed in this area.  
No environmental toxins are allowed in this area.  
No ozone-depleting substances are allowed in this area.  
No greenhouse gases are allowed in this area.  
No persistent organic pollutants are allowed in this area.  
No heavy metals are allowed in this area.  
No hazardous waste is allowed in this area.  
No radioactive waste is allowed in this area.  
No nuclear material is allowed in this area.  
No nuclear fuel is allowed in this area.  
No nuclear waste is allowed in this area.  
No nuclear power plants are allowed in this area.  
No nuclear reactors are allowed in this area.  
No nuclear reactors are allowed in this area.  
No nuclear reactors are allowed in this area.





# VARIETY

Great Tesco own  
brands and products

to suit you





